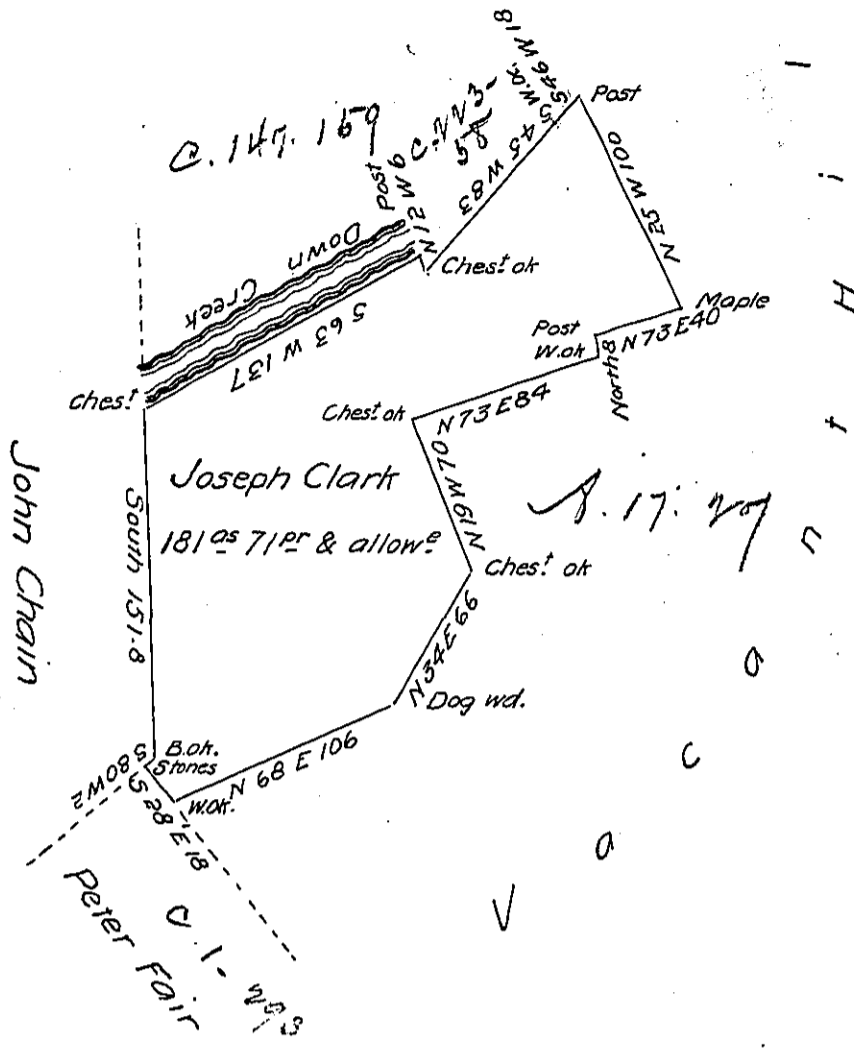


C. 15<sup>th</sup> 173



Surveyed to Joseph Clark on the 25<sup>th</sup> June A.D. 1814 the above described tract containing one hundred and eighty one acres and seventy one perches and allow(obl)nce of six per Cent adjoining lands of Peter Fair John Chain and others, situate on the south side of Blacklick Creek in Blacklick Township Indiana County By warrant of the 26<sup>th</sup> February 1789 as appears from papers remaining in my office

Alexander Taylor D.S.

To Jacob Spangler Esquire }  
 Surveyor General }

IN TESTIMONY that the above is a copy of the original remaining on file in the Department of Internal Affairs of Pennsylvania, made conformably to an Act of Assembly approved the 16th day of February, 1833, I have hereunto set my Hand and caused the Seal of said Department to be affixed at Harrisburg, this twenty-ninth day of April 1904

*Grace D. Brown*  
 Secretary of Internal Affairs.